

# FÖNHALTER



ATF-K55

## BAD-ACCESSOIRES FÖNHALTER

Fönhalter mit Edelstahlring. Edelstahl massiv, gebürstet, seidig-matt handgeschliffen.

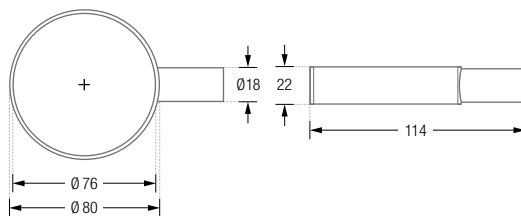
ATF

Ausführung zur Verschraubung.

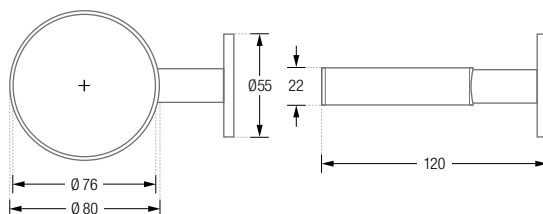
ATF-K55

Ausführung zur Verklebung\* mit Abdeckrosette Ø 55 mm.

ATF Drauf- / Seitenansicht:

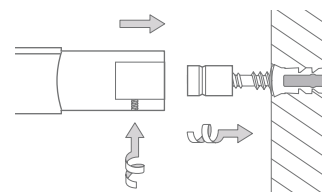


ATF-K55 Drauf- / Seitenansicht:

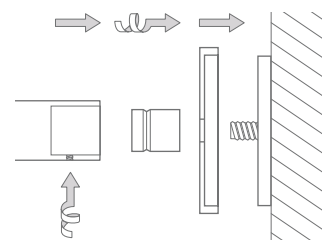


Inklusive Montagematerial.

Montage ATF:



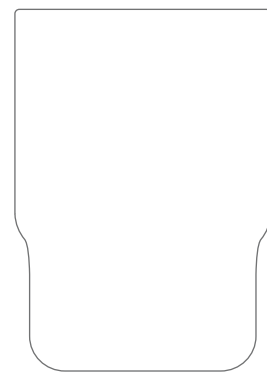
Montage ATF-K55:



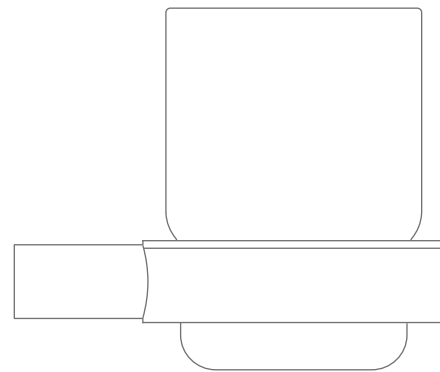
# BAD-ACCESSOIRES

## DESIGN-ÜBERSICHT

Maßstab 1:2



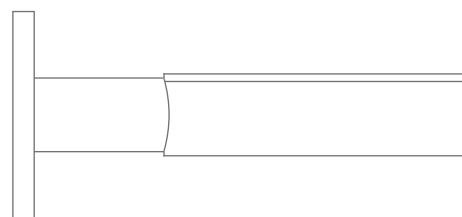
Zahnputzglas ATGG



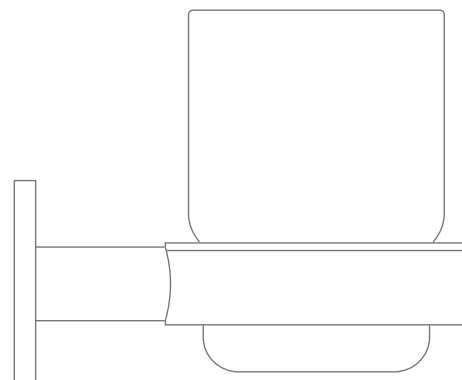
Zahnputzglas mit Halter zur Verschraubung ATG-GB



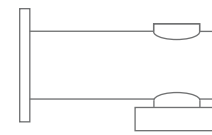
Zahnputzglas-Halter zur Verschraubung ATG



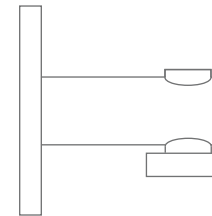
Zahnputzglas-Halter zur Verklebung ATG-K55



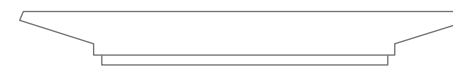
Zahnputzglas mit Halter zur Verklebung ATG-GB-K55



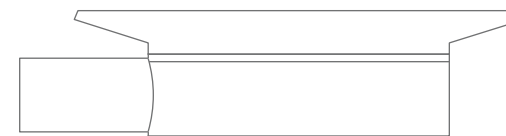
Seifenhalter zur Verschraubung MSH



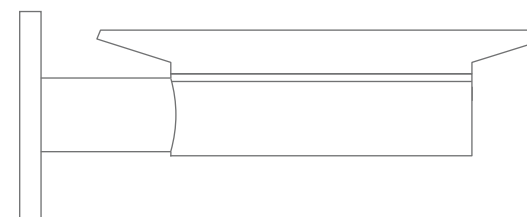
Seifenhalter zur Verklebung MSH-K55



Seifenschale freistehend SOL



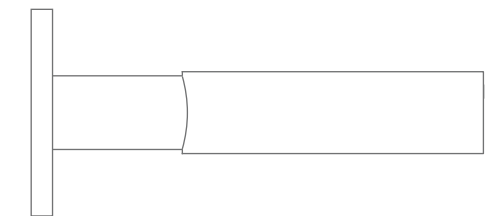
Seifenschale zur Verschraubung ATSOL



Seifenschale zur Verklebung ATSOL-K55



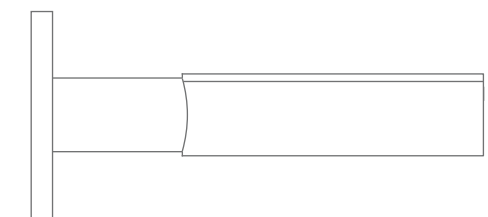
Fönhalter zur Verschraubung ATF



Fönhalter zur Verklebung ATF-K55



Schale zur Verschraubung ATA



Schale zur Verklebung ATA-K55