



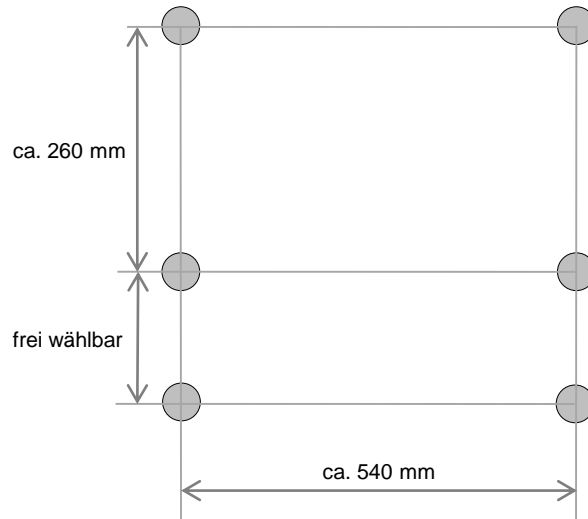
RST260-2 MONTAGEANLEITUNG

Telefon: +49 721 530 772 0
Fax: +49 721 530 772 22
E-Mail: phos@phos.de

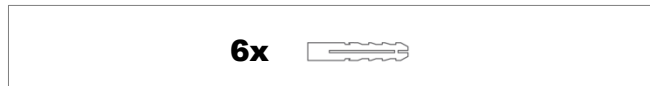
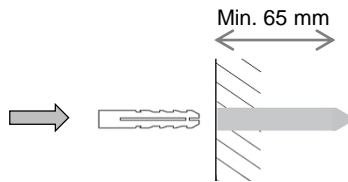
PHOS
Edelstahl Design

PHOS Design GmbH
Werftstraße 12
76189 Karlsruhe
www.phos.de

1 Bohrungen

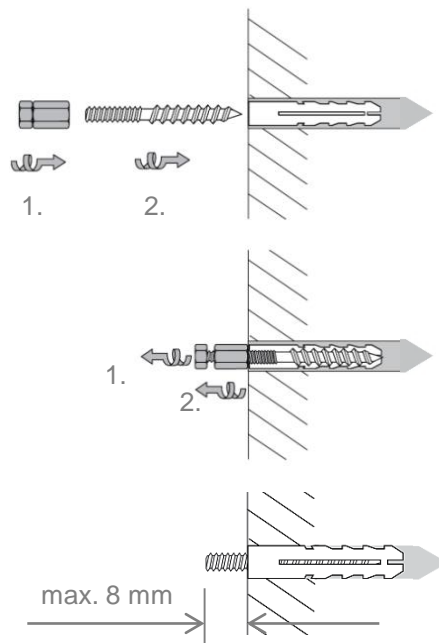


2 Dübel



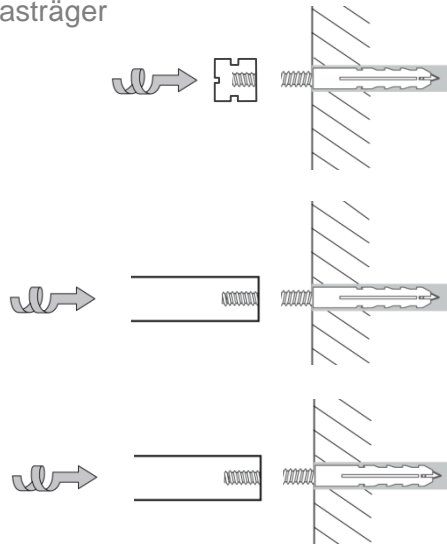
3 Montage der Stockschrauben

jeweils 6x



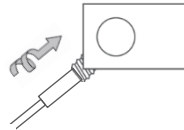
4 Montage der Adapterstücke & Glasträger

Jeweils 2x

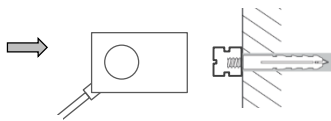


5 Montage des Seilträgers

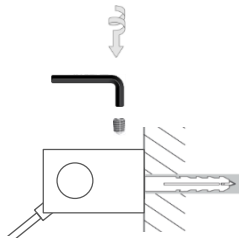
5a



5b



5c



6 Auffädeln der Glasträger