

WAND-TÜRSTOPPER MIT HAKENFUNKTION

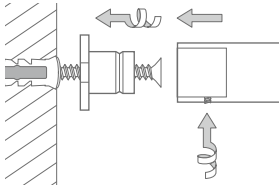


Video zur Montage:
www.youtube.com/user/phosedelstahl

QR-Code
 PHOS YouTube-Channel



Montage H20:



WAND-TÜRSTOPPER MIT HAKENFUNKTION

Türstopper $\varnothing 20$ mm zur Wandmontage mit Anschlagpuffer* und Hakenfunktion.
 Mit teilverdeckter Hutrosette $\varnothing 25$ mm für 6 mm Senkkopfschraube.
 Edelstahl massiv, gebürstet, seidig-matt handgeschliffen.

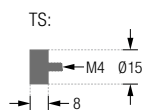
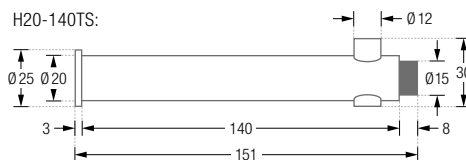
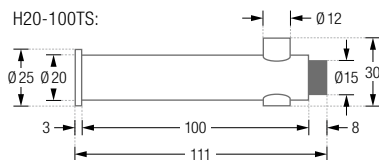
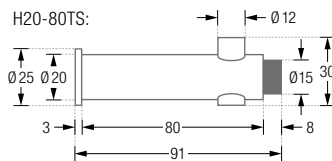
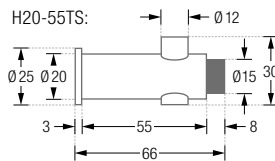
H20-55TS Ausführung in 66 mm Länge.

H20-80TS Ausführung in 91 mm Länge.

H20-100TS Ausführung in 111 mm Länge.

H20-140TS Ausführung in 151 mm Länge.

TS Optionaler Anschlagpuffer* für Wandhaken.





TÜRSTOPPER ZUR WAND- UND DECKENMONTAGE

DESIGN-ÜBERSICHT

Maßstab 1:5

WAND-TÜRSTOPPER



TSW24-11



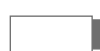
TSW30-11



TSW50-11



TSW25-25



TSW25-55



TSW25-80



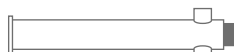
H20-55TS



H20-80TS

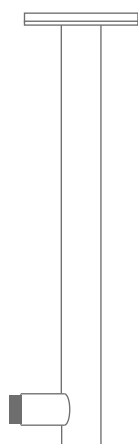


H20-100TS



H20-140TS

DECKEN-TÜRSTOPPER



TSL25-280